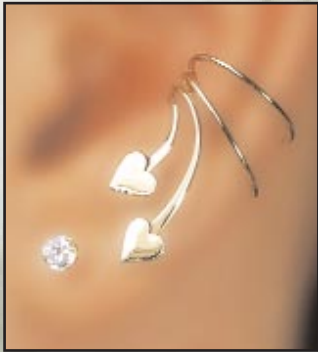
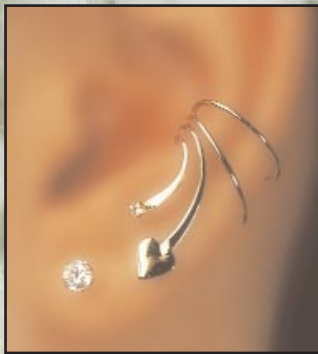


Our "Sweet Hearts" come in two styles of hearts. The Short Waves have delicate little flat hearts and are great with other earrings. The Long Wave comes with larger Puffed Hearts and comes down to the lobe.



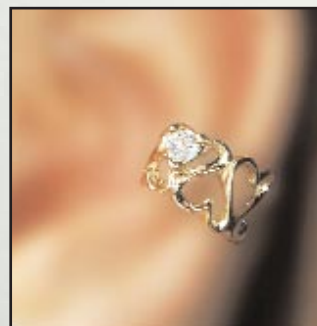
#4H. Short Wave with 2 little Hearts.

This is nice on adults, but it's my favorite on little girls.



#4-H-CZ. Short Wave with Small Heart and Cubic Zirconia.

One small heart and a 2 mm Cubic Zirconia.



#23-CZ. Hearts Band with "Heart Shaped CZ."

Same as #23, with a beautifully cut "heart shaped" Cubic Zirconia. The stone is right side up on the Left ear. (Upside down on right).

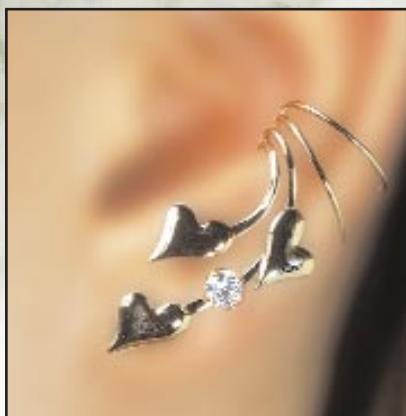
#23 Reversing Hearts Band.

Same as #23-CZ, but without the stone (not pictured)



#4X-H. Long Wave with 3 puffed hearts.

This length is fine worn all by its self, or its fun *framing* a pierced stud.



#4X-H-CZ. Long Wave with 3 puffed Hearts and Cubic Zirconia.

Three puffed Hearts with a brilliant 4 mm Cubic Zirconia. This length is fine worn all by itself, it will probably cover the piercing.