

Our Wave with Large Leaves. These beautiful leaves have a South-West flavor. They have a lot of surface which reflects the light and look great on just about everyone, worn alone or with other earrings.

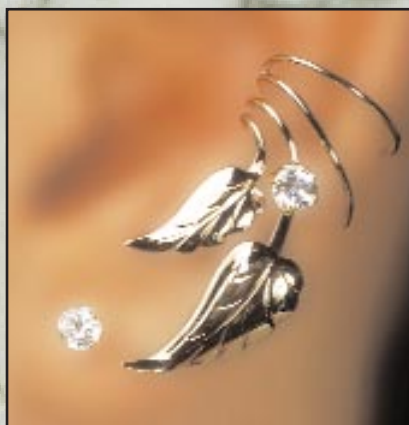
(This style is available in sterling silver or 24k. gold vermeil.)



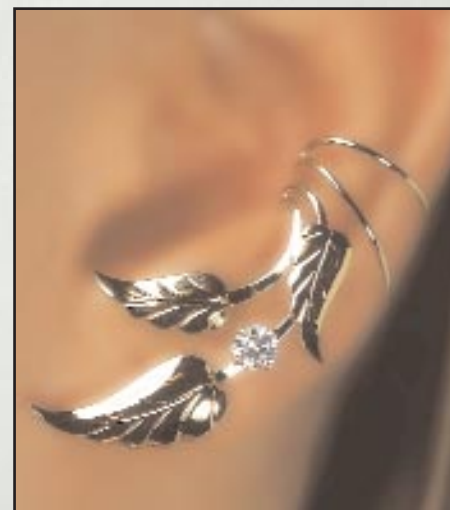
**#4-LL. Short Wave with 2 Large Leaves.**



**#4X-LL-CZ. Long Wave with 3 Large Leaves.**



**#4-LL-CZ. Short Wave with 2 Large Leaves and a large 4 mm Cubic Zirconia.**



**#4X-LL-CZ. Long Wave with 3 Large Leaves and Cubic Zirconia.**

Three leaves with a large 4 mm (1/4 carat) Cubic Zirconia. Covers the lobe.



**18-FL. "Flower" with a Cultured Pearl.**

Pretty carved flower with one 4 mm Cultured Pearl. This is usually worn with their earrings, like a second hole.



**#4-GR. The 'Long Wave' with Grapes.**

A large clump of sterling silver Wine Grapes and gold vermeil grape leaves. Covers the whole lower ear lobe. Two tone or all Sterling Silver only.