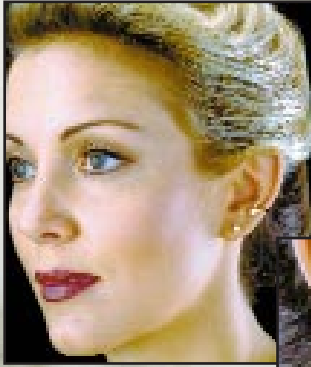
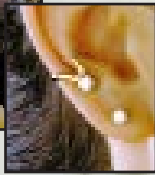


Ear Charms™ Fancy Bands



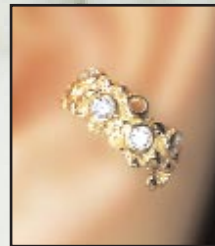
#18-CZ. Wishbone with Cubic Zirconia.

Contemporary Cubic Zirconia design combines quality, fun and elegance! One 4 mm CZ (25 points), 1/4 carat. This is usually worn with other earrings, like having a second hole.



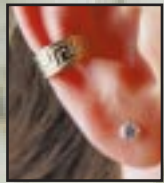
#18-CP. Wishbone with Cultured Pearl

One 4 mm Cultured Pearl. This is usually worn with other pearl earrings, like a second hole.

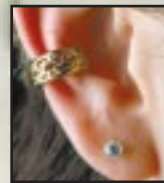


#17-CZ. Pavé Cubic Zirconia in Bubbly Band.

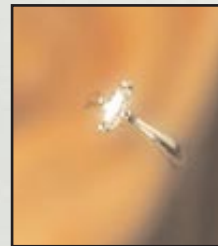
Erupting with bubbles and five 3 mm Cubic Zirconia set 'Pave' style. This is a difficult and time consuming style of stone setting; the metal is actually "pushed" over to hold the stones. Fits either ear.



#24 Greek Meander Band

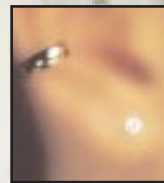


#30 Open-Work Leaf Band.



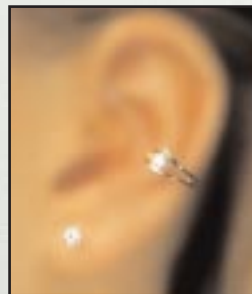
#19-CZ. Marquise Cubic Zirconia.

NEW! Contemporary band design with focal 7 x 4 mm Marquise CZ. Simplicity at it's finest. Bands are usually worn with other earrings, like a second hole. Fits either ear.



#40 Plain Wide Band.

Plain Narrow Band (not pictured #39)



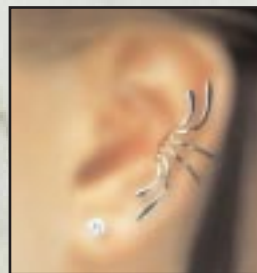
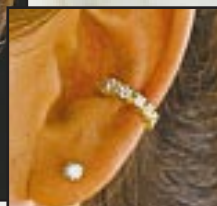
#31-CZ. The CZ "Eye" Band

One 4 mm (1/4/ carat) Cubic Zirconia. Modern, no prong setting. Fits either ear.



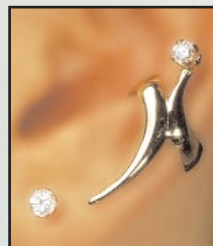
#57-CZ. Tennis Band with Cubic Zirconia.

Eleven 2.75 mm CZ's (equals approximately 1.5 carat diamonds tw.). They are great as singles, pairs or stacked up on one ear. Priced individually, for a pair order 2 qty.



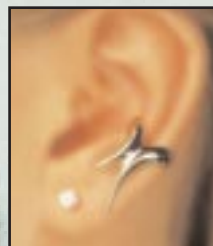
#7 Reflections.

This style was born from a pair of The Waves worn both on one ear, but this is all one piece and fits either ear. It sits up high at the center of the cartilage of the ear, and is usually worn with other earrings.



#11-CZ. Sculptural Design with Cubic Zirconia.

NEW! Contemporary Sculpted design with a 3.5 mm Cubic Zirconia. This looks fantastic with your other earrings, especially with a pair of pierced diamond studs. Carved & lost wax hydrogen cast for adjustability.



#12. Sculptural Design.

NEW! Contemporary Sculpted design. We affectionately call this one "The Tooth". It looks great with your other earrings. Very unusual. Carved & lost wax cast.